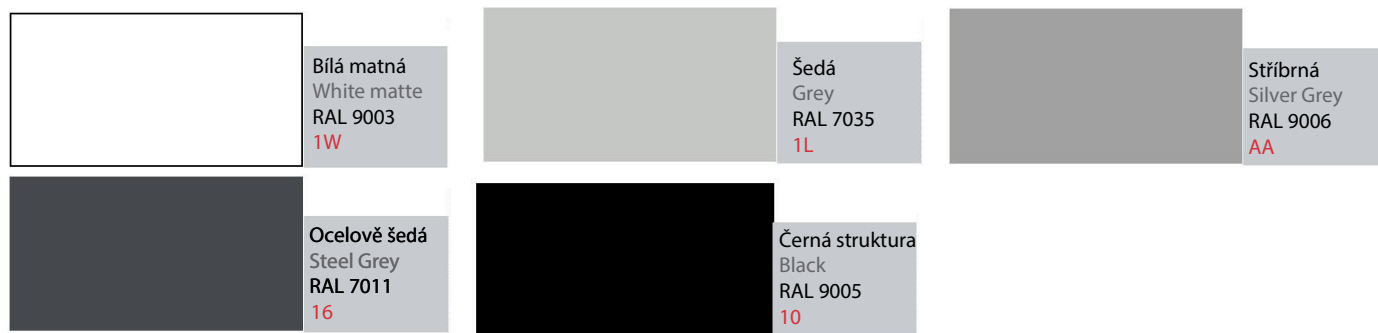


VZORNÍK COLORS

Laminované povrchy | Laminated surface finish

	Bílá White WT		Bílá Perlička Front white 1P		Světle Šedá Light Grey LG
	Šedá Grey SE		Stříbrná Silver Grey SI		Antracit Anthracite AT
	Jilm Elm JD		Jasan Kamenný Stone Ash JK		Třešeň Piemont Cherry Piemont TD
	Jasan Přírodní Ash Highland JP		Buk Beech BV		Dub Slavonský Slavonian Oak DS
	Bříza Sněžná Snow Birch BR		Javor Maple BS		Třešeň Cherry TK
	Ořech Lyon Walnut Lyon OY		Akácie Acacia AK		

Kovové povrchy | Metal surface finish



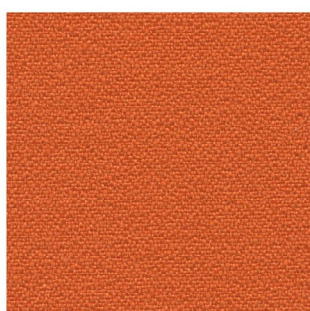
Sklo | Glass



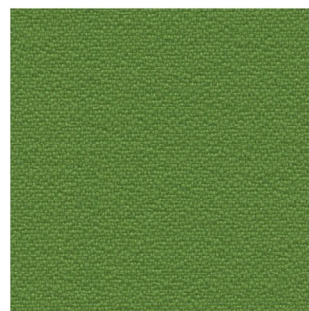
DINO



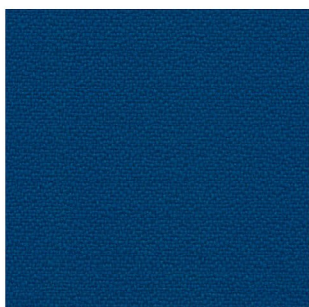
D6003



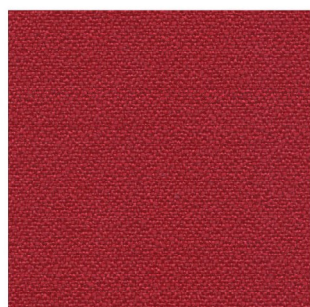
D3012



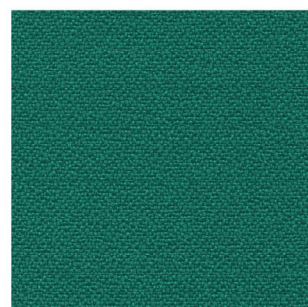
D7048



D6016



D4011



D7008



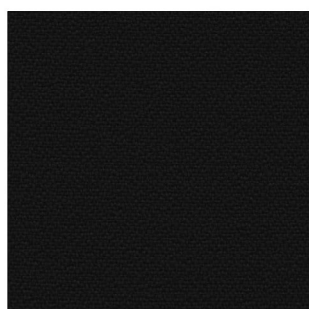
D6098



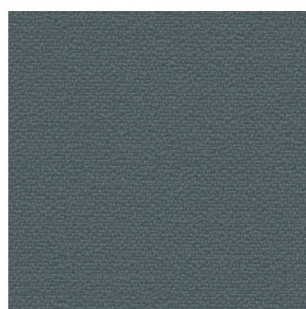
D4017



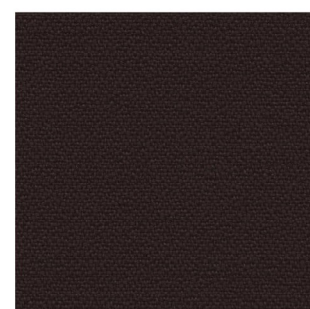
D1008



D8033



D8010



D2036

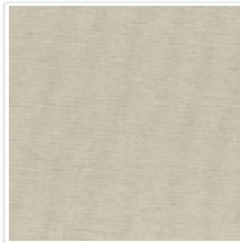
Dino

Composition/Složení/Zusammensetzung	100% Polyester	
Weight/Váha/Gewicht	350 g/lm	
Width/Šířka/Breite	140 cm	
Abrasion resistance/Oděruvzdornost/Scheuerfestigkeit	Martindale 100 000 cycles	UNI EN ISO 12947/2
Light fastness/Stálobarevnost na světle/Lichtechtheit	6	UNI EN ISO 105-B02
Fastness to rubbing/Stálobarevnost v otěru/Reibechtheit	4/5	UNI EN ISO 105-X12
Pilling/Žmolkování/Pilling	5	UNI EN ISO 12945/1
Flammability/Ohnivzdornost/Feuersicherung	EN 1021/1-2 (GB)CRIB 5	

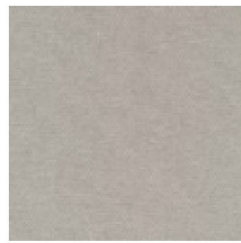
- For standard care regularly use vacuum cleaner. Clean with damp cloth.
 - Pro běžné čištění a údržbu pravidelně vysávejte vysavačem. V případě potřeby čistěte hadříkem navlhčeným vodou.
 - Zur standardmäßigen Pflege bitte regelmäßig absaugen. Reinigen Sie den Stoff mit einem feuchten Tuch.
 - Shades of upholstery fabrics may differ slightly within the various batches of delivery.
 - Odstíny potahových látek mohou mít mírné odchylky v rámci různých dodávek.
 - Bei Stoffen sind handelsübliche Farbabweichungen je nach Produktionscharge möglich.
-



Bombay 01



Bombay 04



Bombay 14



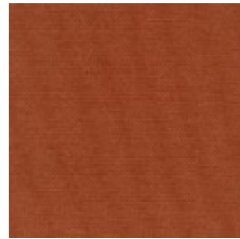
Bombay 24



Bombay 34



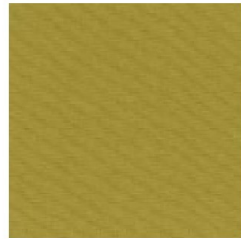
Bombay 74



Bombay 39



Bombay 15



Bombay 25



Bombay 38



Bombay 73



Bombay 79



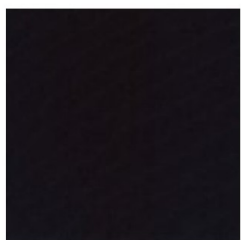
Bombay 99



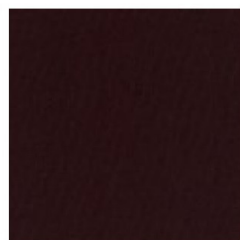
Bombay 89



Bombay 69



Bombay 02



Bombay 63



Bombay 33



Bombay 64



Bombay 36



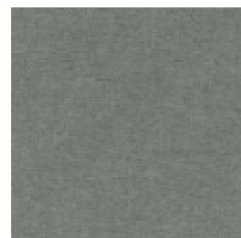
Bombay 48



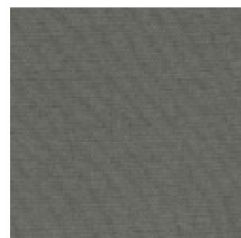
Bombay 57



Bombay 37



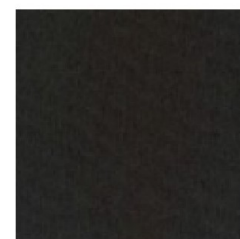
Bombay 06



Bombay 26



Bombay 84



Bombay 56

Složení: 100% polyester, Váha: 350 g/m²

Šíře: 140 cm, Oděruvzdornost: 100 000 cyklů

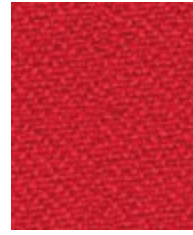
Látka s nešpinivou úpravou



Tortuga
YB168



Lobster
YB087



Belize
YB105



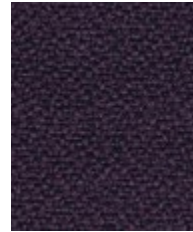
Calypso
YB106



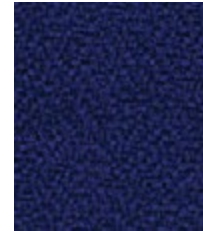
Tequila
YB038



Bridgetown
YB102



Tarot
YB090



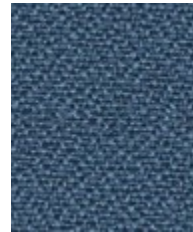
Ocean
YB100



Rum
YB086



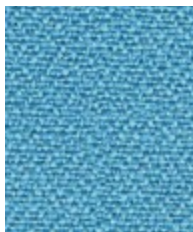
Steel
YB095



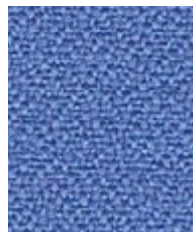
Martinique
YB004



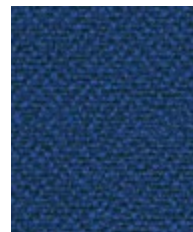
Costa
YB026



Marianna
YB157



Bluebell
YB097



Scuba
YB089



Montserrat
YB011



Madura
YB156



Apple
YB096

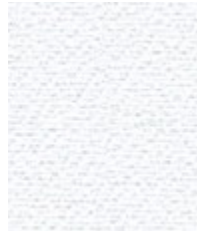


Campeche
YB301



Windjammer
YB047

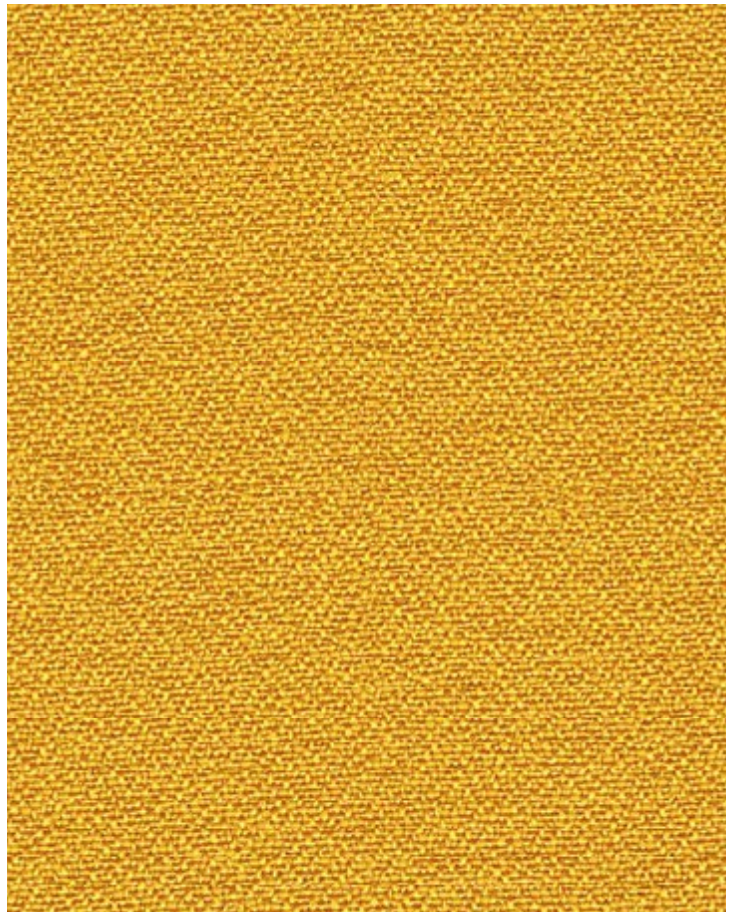
Photographic fabric scans are not colour accurate. Always request actual fabric samples before ordering.



Adobo
YB165



Oyster
YB107



Solano
YB088



Aruba
YB093



Sandstorm
YB302



Blizzard
YB108



Sombrero
YB046



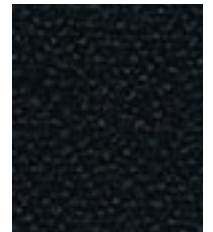
Slip
YB094



Buru
YB170



Paseo
YB019



Havana
YB009



Lucia is an ever popular crêpe weave synthetic panel fabric. It's manufactured from 100% recycled polyester saving virgin raw materials and giving a reduced environmental footprint. With a non-lustrous appearance, its bold and bright colour palette is designed to complement the Xtreme range for upholstery.

This fabric is largely acoustically transparent and as such is ideal to be used as a decorative facing for sound-absorbing boards.



STANDARD 100
11-62664
Shirley

www.oeko-tex.com



Technical information

UK

Composition

100% Post Consumer Recycled Polyester

Environment

Certified to the EU Ecolabel
Certified to STANDARD 100 By OEKO-TEX®
Certified to Indoor Advantage™ Gold
Made from 100% post-consumer recycled polyester
Non metallic dyestuffs

Width

170 cm minimum

Weight

260 g/m² ±5% (442 g/lin.m ±5%)

Flammability

EN 1021 - 1 (cigarette)
EN 1021 - 2 (match)
BS 7176 Low Hazard
BS 476 Part 7 Class 1 (Adhered)
EN 13501-1 (SBI) Adhered class B, s1, d0
EN 13501-1 (SBI) Un-adhered class B, s1,d2
Note: Flammability performance is dependent on components used. Our certificates show what substrates have been used in our tests. For composite tests customers must ensure their complete furniture meets the necessary standards.

Light Fastness

6 (ISO 105 - B02)

Fastness to Rubbing

Wet: 4, Dry: 4 (ISO 105 - X12)

Acoustic Properties

Acoustically transparent, Acoustic graphs available upon request

Bleach Cleanable

ISO 105 E03 colour change 4 for dilution factor 1:4 chlorine solution

Cleaning

Vacuum regularly. Wipe with a damp cloth using a proprietary upholstery shampoo/ soap. For deeper cleaning use steam, bleach, alcohol or professionally dry clean. Can be washed at 60°C. Full details can be found in our cleaning and disinfection guide.

Please note that seam performance is dependent on seam construction and needle and thread type. We recommend that appropriate sewing advice be taken.

Batch to batch variations in shade may occur within commercial tolerances. We reserve the right to alter technical specifications without notice. The Unregistered Design Rights and the Copyright in all designs are the exclusive property of Camira Fabrics Limited.

D

Zusammensetzung

100% post-consumer recyceltes Polyester

Umweltfreundlich

Nach Zertifikat EU Ecolabel
Nach Zertifikat STANDARD 100 By OEKO-TEX®
Nach Zertifikat Indoor Advantage™ Gold
Hergestellt aus 100% post-consumer recyceltes Polyester
Nicht schwermetallhaltige Farbstoffe

Breite

170 cm nutzbare Breite

Gewicht

260 g/m² ±5% (442 g/lfd.m ±5%)

Feuersicherung

EN 1021 - 1 (Zigarettestest)
EN 1021 - 2 (Streichholztest)
BS 7176 Low Hazard
BS 476 Part 7 Class 1 (Adhered)
EN 13501-1 (SBI) Adhered class B, s1, d0
EN 13501-1 (SBI) Un-adhered class B, s1,d2
Bemerkung: Die Schwerentflammbarkeit hängt von den verwendeten Komponenten ab. Unsere Zertifikate zeigen auf, welche Substrate bei den Tests verwendet wurden. Bei Verbundtests muss sichergestellt sein, daß das komplette Möbel den entsprechenden Standards entspricht.

Lichtechtheit

6 (ISO 105 - B02)

Reibechtheit

Nass: 4, Trocken: 4 (ISO 105 - X12)

Akustische Eigenschaften

Akustisch durchlässig, Akustische Messwerte auf Anfrage

Chlorbleiche-Beständig

ISO 105 E03 Farbänderung 4 bei einer 1:4 verdünnten Chlor-Lösung

Reinigung

Regelmässig absaugen. Mit einem feuchten Tuch abwischen oder mit einem geeigneten Polstershampoo behandeln. Für eine Grundreinigung bitte Dampf, Chlorbleiche, Alkohol oder professionelle Trockenreinigung verwenden. Kann bei 60°C gewaschen werden. Weitere Informationen finden Sie in unserem Leitfaden zur Reinigung und Desinfektion.

Eine optimale Nahtausreissfestigkeit hängt von der Nahtfahne, der verwendeten Nadel und dem Näh-Garn ab. Wir empfehlen daher Nähversuche durchzuführen.

Handelsübliche Farbabweichungen können auftreten und berechtigen nicht zur Reklamation. Wir behalten uns die Änderung technischer Spezifikationen vor. Die registrierten und nicht registrierten Urheberrechte der Dessinierungen sind ausschliessliches Eigentum der Camira Fabrics Limited.

F

Composition

Fabriqué en polyester recyclé à 100%

Écologique

Avec le certificat EU Ecolabel
Certifié à STANDARD 100 By OEKO-TEX®
Certifié à Indoor Advantage™ Gold
Fabriqué en polyester recyclé à 100% après consommation
Teintures non métalliques

Largeur

170 cm minimum

Poids

260 g/m² ±5% (442 g/m.l ±5%)

Flammabilité

EN 1021 - 1 (cigarette)
EN 1021 - 2 (allumette)
BS 7176 Low Hazard
BS 476 Part 7 Class 1 (Adhered)
EN 13501-1 (SBI) Adhered class B, s1, d0
EN 13501-1 (SBI) Un-adhered class B, s1,d2
Notez: La performance de flammabilité dépend des composantes utilisées. Nos certificats indiquent les substrats utilisés dans nos tests. Pour les tests composites, les clients doivent s'assurer que leurs meubles complets satisfont aux normes nécessaires.

Solidité à la lumière

6 (ISO 105 - B02)

Solidité au Frottement

Mouillé: 4, Sec: 4 (ISO 105 - X12)

Propriétés Acoustiques

Acoustiquement transparent, graphiques acoustiques disponibles sur demande

Nettoyable au javel

ISO 105 E03 changement de couleur 4 pour le facteur de dilution 1: 4 solution de chlore

Nettoyage

Passez l'aspirateur régulièrement. Essuyez avec un chiffon humide en utilisant un shampoing/savon pour tissus d'ameublement exclusif. Pour un nettoyage en profondeur, utilisez la vapeur, javel, alcool ou un nettoyage à sec professionnel. Peut être lavé à la machine, programme maximum 60°C. Vous trouverez tous les détails dans notre guide de nettoyage et de désinfection.

Veillez noter que la performance du joint dépend de sa construction ainsi que de l'aiguille et du type de fil utilisés.

Une variation de couleurs peut provenir (commerciallement tolérable). Nous réservons le droit de changer les spécifications techniques sans préavis. Les Droits de Conception non-enregistrés et les droits d'auteur de tous les motifs sont la propriété exclusive de Camira Fabrics Limited.

ES

Composición

Producido con poliéster 100% reciclado

Ambiental

Certificado con EU Ecolabel
Certificado de STANDARD 100 By OEKO-TEX®
Certificado de Indoor Advantage™ Gold
Producido con poliéster 100% reciclado tras ser consumido
Tintes no metálicos

Ancho

170 cm mínimo

Peso

260 g/m² ±5% (442 g/lin.m ±5%)

Inflamabilidad

EN 1021 - 1 (cigarillo)
EN 1021 - 2 (cerilla)
BS 7176 Low Hazard
BS 476 Part 7 Class 1 (Adhered)
EN 13501-1 (SBI) Adhered class B, s1, d0
EN 13501-1 (SBI) Un-adhered class B, s1,d2
Nota: El rendimiento de la inflamabilidad depende de los componentes usados. Nuestros certificados muestran qué substratos se han usado en nuestros tests. Para tests compuestos nuestros clientes deben asegurar si sus muebles cumplen la normativa al uso.

Solidez a la luz

6 (ISO 105 - B02)

Solidez al rozamiento

Húmedo: 4, Seco: 4 (ISO 105 - X12)

Acústico Propiedades

Acústicamente transparente, gráficos disponibles bajo petición

Posibilidad lavado con Lejía

ISO 105 E03 cambio color 4 para un factor de disolución 1:4 solución cloro

Limpieza

Uso aspirador regularmente. Limpiar con un trapo usando jabón y agua o producto limpieza para tapicerías. Para una limpieza más profunda usen vapor, lejía, alcohol o limpieza en seco. Se puede lavar a 60°C. Los detalles completos se encuentran en nuestra guía de limpieza y desinfección.

Tenga en cuenta que el rendimiento de la costura depende de la construcción de la costura, además de la aguja y del tipo de rosca. Le recomendamos que se aconsejen para coser la costura.

Las variaciones de lote a lote en la sombra se puede producir dentro de tolerancias comerciales. Nos reservamos el derecho a efectuar modificaciones técnicas sin previo aviso. Los derechos sobre los diseños no registrados y los derechos de autor en todos los diseños son propiedad exclusiva de Camira Fabrics Limited.